

**NCIP 2003
COMMUNITY DEVELOPMENT AWARD**

PART III- Project Accomplishments

A. Project Summaries

Name of Community or Multi-Community: Kimball Population: 2,600
Name of Project: Kimball Health Services Child Development Center
Project Contact Person: Kim Woods
Day Phone: (308) 235-1952 E-mail: ceo@kimballhealthservices.org
Nominated for Special Award? Yes If Yes, What Category? Community Development
Subcategory? Community Service
Date Project Began (mo./yr) 08/2001 Date Completed (mo./yr) 09/2002
Please Check if the Project is Ongoing Volunteer Hours 250
Number of Volunteers 120

1. Give a brief description of the project.

The Kimball Health Services Child Development Center opened in August 2001 when there was a childcare crisis in the community. The crisis arose when three childcare providers closed due to reasons other than a lack of children needing care. Kimball Health Services decided to help fill the child care need for children of employees and the community. The facility was in a very small rented house and a maximum of 12 children could be cared for at any one time. The demand for our facility continued to grow when another childcare facility closed due to the death of the provider.

Through a variety of volunteer efforts and donations, our new childcare center opened in September 2002. The new facility is licensed for 31 full-time positions. As of June 2003, there are over 80 children (full-time, part-time or drop-in) who are enrolled in our facility and the waiting list continues to grow.

2. Identify the planning and implementation of the project.

a. Describe methods used to plan and implement the project.

Kimball Health Services Child Development Center expansion project involved a variety of volunteers and donors. The Kimball Hospital foundation coordinated the project, since it was the recipient of the donated building which is now the home of the Child Development Center. The building was empty for a number of years and needed extensive remodeling including new electrical wiring, fire alarms and a new roof.

b. Describe how the project relates to the communities overall goals

The community's goals include increasing the per capita income, diversifying the economy, providing quality education, expanding the labor force and providing quality healthcare. Through the expansion of our childcare facility, we were able to offer childcare services from 6 a.m. to 6 p.m. These extended hours assisted people who previously stayed at home with

having quality childcare so they were able to join the labor pool, thus increasing their per capita income and in turn enhancing the local economy. The children have a structured educational experience, since the child development center focuses on the needs of children from 6 weeks to 12 years of age. Our center has a special educational curriculum designed for the pre-schoolers. This curriculum assists the children so they are "ready" to learn when they enter Kindergarten. The program for our school-aged children focuses on literary, math and inter-personal skills. As the children develop, they have access to a variety of educational computer programs, books including library programs, art, and sign language.

c. *Describe how the project was identified as a priority for the community.*

Currently, 100% of the physicians/physicians assistants with small children have their youngsters enrolled in our facility. Our childcare center has directly impacted the community's ability to retain medical providers. Their expertise contributes greatly to the healthcare in our community and five county areas. In order to identify the project as a community priority and demonstrate the childcare need in the community, the local chamber of commerce conducted a survey. The survey of childcare providers detailed the licensed capacity, number of children enrolled and number of children on waiting lists for each facility. The employees of Kimball Health Services were surveyed regarding their childcare needs. The results indicated that if the current center did not expand, there would be increased absenteeism, tardiness, and difficulty in recruiting and retaining employees at the hospital and other local businesses.

3. *Describe volunteer involvement in planning and implementing the project.*

a. *Describe how responsibilities were delegated among volunteers.*

Volunteer involvement is the reason the childcare facility was able to expand. A volunteer hospital board member and businessman understood the need for the expanded facility to enable the care for more children. This volunteer made the initial contact with the building's owner. Thus opening the door for the gift of the building to the Kimball Hospital Foundation. The Foundation Director worked closely with this volunteer and donor over a period of months to finalize the donation.

b. *Describe how volunteers were recruited for the project.*

After the building was donated, the remodeling project involved 20 people on the volunteer hospital and foundation boards. Volunteers were also utilized during the actual remodeling of the building. Twenty additional volunteers donated their time and talent to clean, paint, wallpaper, and move into the new facility. A total of 250 volunteer hours were donated to the project. The City of Kimball waived the building permit fees for the cost of the remodeling project. In addition, there were 85 volunteers who helped with playground equipment fundraisers.

The director of the Kimball Hospital Foundation and volunteer coordinator of Kimball Health Services worked together to match the volunteer's talents to a task that best fit the project's needs. Parents, grandparents, and community members of all ages donated their time, talent, equipment, toys and money to the project. A participant in the local juvenile law

enforcement diversion program and his parents volunteered to paint the outside of the building.

4. Identify Project Outcome.

a. What did the community intend to change as a result of the project? Did the project result in the intended change and what was the impact of the change?

The Kimball business, educational and general community realized they needed reliable, quality childcare. The quality of childcare directly affects employee productivity, recruitment and retention. The availability of childcare directly impacts economic development and the number of people in the labor force. Kimball Hospital foundation and Kimball Health Services have seen the childcare facility as a community development project.

b. Did the project have community-wide support? Describe

The community-wide support has been tremendous. The businesses are comfortable that their employees have a choice for child care. This has assisted with employee retention and recruitment. The community overwhelmingly supported the childcare center during fundraisers. Businesses and individuals donated items and money to assist the children with their fundraiser for playground equipment. Raffles and bake sales were also held to raise funds.

c. Describe the specific impact that resulted from the project in the community – include measurable outcomes.

By having Kimball Health Services Child Development Center, young children in the community are in a supervised, quality program throughout the year. Care is provided for up to 31 children at any one time. Children are developing fine and gross motor skills, learning their alphabet, numbers, shapes, and sign language, basic Spanish and how to interact with others.

5. Describe how resources were identified and used to successfully implement the project.

The Kimball Hospital Foundation identified volunteers who could contribute time, talent and financial resources to the project. They were identified through community connections, a donor database, and volunteer database. The Foundation then coordinated the volunteer work sessions around the times when the paid contractors were working.

6. What aspects of the project were especially unique or creative – describe.

The Child Development Center received a grant from Nebraska Health and Human Services for the Center's expansion project. Grants are only awarded to centers that demonstrate a need for childcare in the community. State standards must be met and there must be a commitment to operate the facility for a minimum of two years.

*Thank you for
"Caring for tomorrow, today."*

*The Kimball Hospital Foundation
acknowledges the following donors and memorial gifts:*

Norton & Diana Warner
donation of building
for new daycare facilities
Ken & Bannie Risk
donation of lights and ceiling fans
for new daycare

*Cecil Gentry Memorial
Harley & Marjorie Dietz
Lester Hornung, Jr. Memorial
Joyce Childs
Ruth & Victoria Hornsby
Elizabeth Farnham Memorial
Virginia Kahn
Sara & Donald Lane
John & Karen Maxwell
Lorna Wick Memorial
Clarence Taylor Memorial
Fredda Farnes Memorial
Dorothy Joyce Maxwell*

*Kimball Hospital Foundation Golf Classic,
Sunday, September 8, 1 p.m.
Four Holes Golf Course
To enter, contact Rolinda at 215-1967*

Donations to the Four Holes Golf Course, regardless of amount, will be gratefully accepted and recognized by Kimball Health Services. If you are interested in how you could help at the next event, please contact Rolinda Sample, Director at 215-235-1967, 505 South Burg Street, Kitchell, or rolinda@kimballhealth.org



KIDS WALK TO RAISE FUNDS – Students from West Elementary School took to the track Friday morning and walked laps to raise funds for Kimball Health Services. They walked from 9-10:15 a.m. at the Jr./Sr. High School track. After about a half an hour of walk, they were ready for a drink of water from the sports nourishment bench. At 10:15 a.m. students from Mary Lynch Elementary School took to the track for their hour-and-a-half fund-raising walk. Hospital Foundation Director Rolinda Samples said the students from both elementary schools had signed up for the event. The total of the raised will be available after Friday.

Audrey Blackwell/OBSE



WEST KIDS ON THE FUNDRAISING TREK – (Photo by Audrey Blackwell/OBSE)





COURTESY PHOTO

KIMBALL HEALTH Services Child Development Center and Foundation celebrated a ribbon cutting and open house last weekend at the Warner Building located at 414 W. 2nd. The expansion of the Center provided additional childcare for 19 children and jobs for four additional people while filling a vacant building. The Center is licensed for 31 children and is open to the community in addition to employees of the Health Services. Cutting the ribbon is Kim Woods, CEO, along with Foundation Director Rolinda Sample, staff Amira Moore, Director, Stephanie Culek, Toni Boos and Melba Davis, children from the center, Deb Crugo, Economic Development Director, Chamber Ambassadors and Chamber staff, Staci Wurdeman.

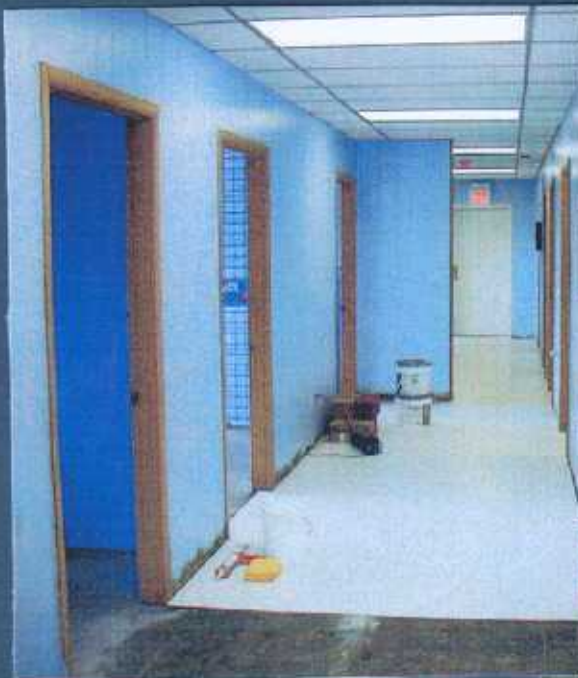
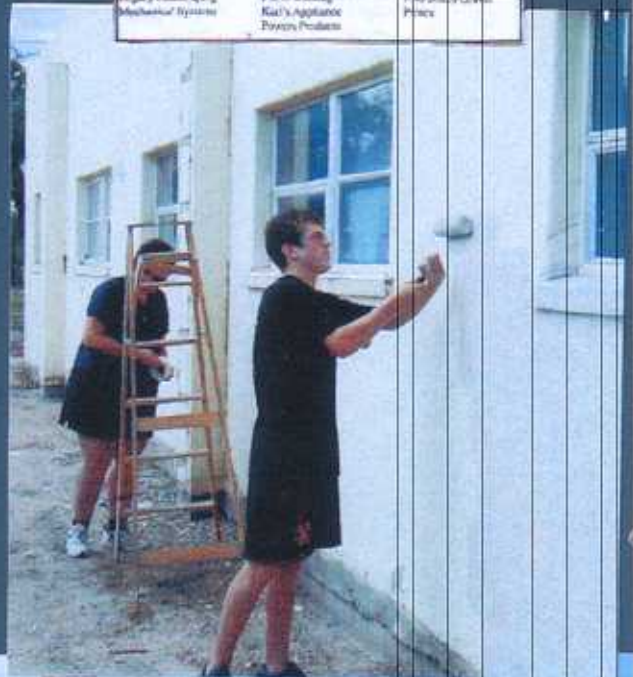
The public is invited to share in the celebration.



Kimball Health Services
 FOUNDATION AND DAYCARE
 RIBBON CUTTING AND OPEN HOUSE
 Sunday, November 17, 2002
 1:00-3:00 p.m.
 The Warner Building, 414 West 2nd Street
 Kimball, Nebraska

Thank you local businesses in providing excellent products and services during our building remodel.

- | | | |
|----------------------|-----------------------------|-------------------------|
| Debbie R Flooring | Burgin Electrical | KA Lumber |
| Sebia Lumber Company | Keweenaw Auto Parts | PHD Dns |
| Tommy's Hardware | Dave's Auto Glass | Worshipful Mty |
| Wagner Electric | Wade's Discount & Dress Lin | Central Valley Plumbing |
| Legacy Landscaping | Fisher Heating | The Study Closet |
| Mechanical Systems | Kal's Appliance | Price |
| | Payson ProPaint | |



Hospital Foundation Receives building from Warner family

KIMBALL — The Kimball Health Services and Hospital Foundation received a donation that will help both entities with space concerns.

"We are truly grateful that Norton and Diana Warner remembered the Kimball Hospital Foundation. The gift of the old radio station building is a blessing," said Rolinda Sample, Executive Director of the Kimball Hospital Foundation. The building has been named "The Warner Building" in recognition of the gift.

The donation of the building came at a time when Kimball Health Services was looking for a site to expand their daycare facilities. The Warner Building is in the process of being remodeled to fit the needs of the Kimball Health Services Child Development

Center of children at the current daycare center have donated their time and talent to assist with painting the interior of the building.

"We are excited about moving into the new facility this September. The curriculum chosen by Amira Moore, Child Development Center Director, is age appropriate for the children and will provide a unique, exciting learning experience," said Kim Woods, CEO of Kimball Health Services.

A computer will be available for the children to use for educational games. Stephanie Culek and Melba Davis, both of Kimball, join Amira Moore on staff. The Warner Building is located at 414 West Second Street.

As with the current Child

lights and ceiling fans for the new facility. The Nebraska Health and Human Services awarded a grant to assist with purchasing new furniture and equipment needed for the expansion of the facility. The expansion will assist in filling the need for childcare in the community.

The Kimball Hospital Foundation is a 501(c)(3) non-profit organization. Monetary donations received by the Foundation can be made for general equipment purchases or may be designated for special areas such as the daycare. The Foundation can be remembered through estates, wills, and memorial gifts. If you are interested in making a contribution to the Foundation, Rolinda Sample can be



Courtesy photo