

GRANT APPLICATION WORKSHOP

Building Entrepreneurial Communities

BUILDING ENTREPRENEURIAL COMMUNITIES

- Nebraska Agriculture Innovation Advantage (LB90)
- \$250,000 available per year
- FY 2005-2006 and FY 2006-2007

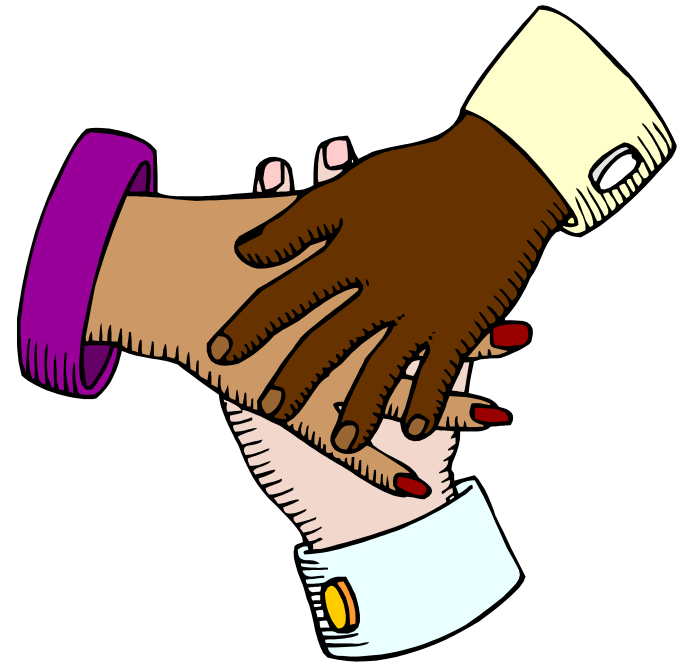
BUILDING ENTREPRENEURIAL COMMUNITIES

The purpose is to support economically depressed rural areas of Nebraska in building entrepreneurial communities through grants that will create community capacity

BUILDING ENTREPRENEURIAL COMMUNITIES

Requires coalition of
local governments and
other parties

Everyone can
participate

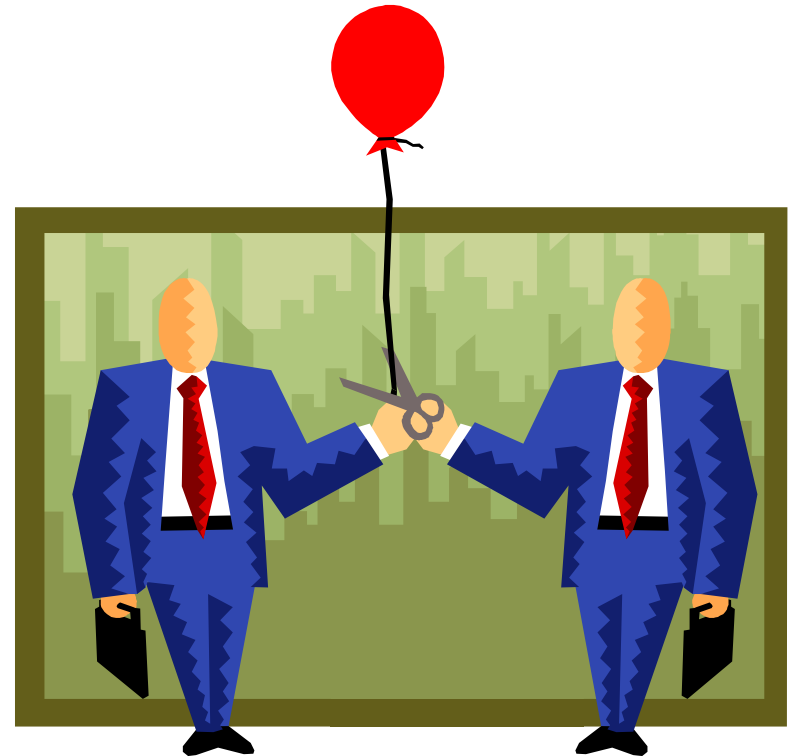


ELIGIBLE APPLICANTS

Eligible applicants include every local government (municipality or county) unincorporated areas within a county, or census tracts that are **collaborating**

ELIGIBLE APPLICANTS

- At least **TWO** local eligible applicants must **collaborate** on the project



APPLICANTS

At least **ONE** of the local governments must have chronic distress:

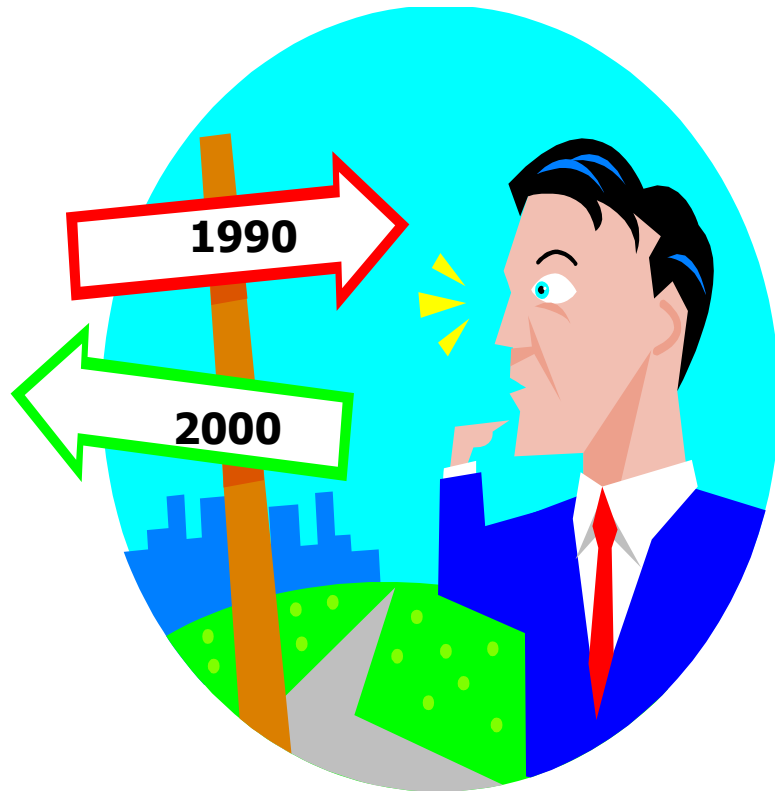


As indicated by...

APPLICANTS

1. An unemployment rate which exceeds the statewide average unemployment rate;
2. A per capita income below the statewide average per capita income;
or

APPLICANTS



3. A population loss between the two most recent federal decennial censuses

(#3 is new wording passed in LB1003 effective 3/6/06)

ELIGIBLE ACTIVITIES

- Provide education and technical assistance to energize small business development and entrepreneurship
- Provide technical assistance to facilitate small business transfer

ELIGIBLE ACTIVITIES

- Build community business capacity and leadership programs
- Generate opportunities that will attract and retain young people and families

MORE ACTIVITIES



- Provide education about philanthropy and intergenerational transfer of wealth, and
- Build community endowments to support these activities

FUNDING LEVELS



- Maximum amount for an award per collaboration project is \$75,000.

FUNDING LEVELS

Grant recipients will have two (2) years to expend the grant funds from the date of the grant award.



FUNDING LEVELS

- No municipality or county shall receive funding for more than one project.
 - **Check this point carefully when building coalitions to avoid being disqualified.**



FUNDING

DOLLAR FOR DOLLAR CASH

match is required

Match may not be from
other state or federal
funds



BUILDING ENTREPRENEURIAL COMMUNITIES

Application

**available online at
www.ruralnebraska.info**

BUILDING ENTREPRENEURIAL COMMUNITIES

- Recipients of Round One funding:

Cambridge-McCook
Chase-Perkins County
Cherry County
Cheyenne County
Frontier County
Furnas-Harlan County
Knox County
Scotts Bluff County
Valley County



BUILDING ENTREPRENEURIAL COMMUNITIES

- Recipients of Round Two funding:

Butler County

Garfield County

Grand Island/Omaha

Holt County

Knox County

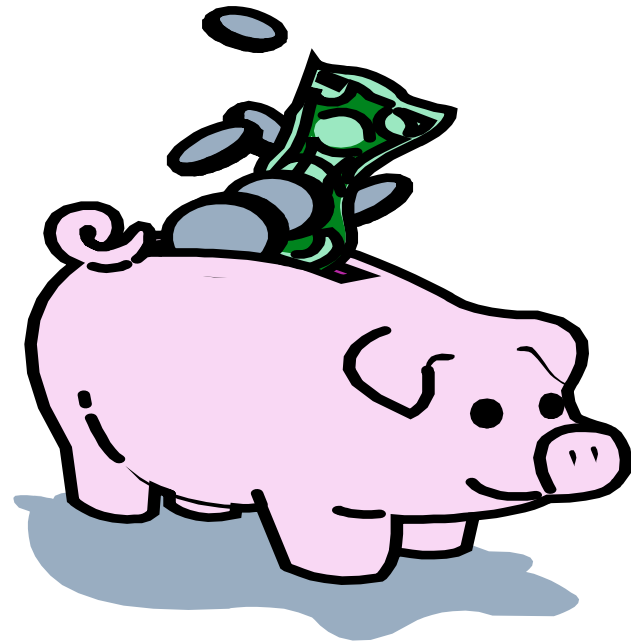
Logan County

Nebraska City-Auburn
and Tecumseh

Phelps-Kearney County

Thayer County

Wayne County



For assistance contact:

Linda Fettig

Rural Development Commission

308-749-2291 (phone and cell)

308-749-2223 (fax)

linda.fettig@ded.ne.gov